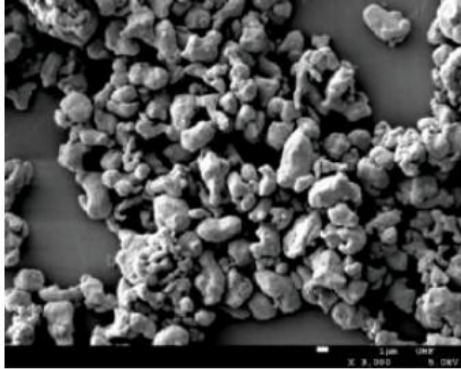


Grade: UF-F

SEM-VIEW



- For diamond tools, PM / MIM, water and soil remediation
- Improve the durability and sharpness of tools
- Extremely high reactivity

Chemical Analysis (%)

Fe	≥98.2
O	≤1.15
C	≤0.03
N	≤0.01

Physical Properties

Particle Size Distribution (μm)	D10	1.0-1.5
	D50	2.5-3.5
	D90	4.2-5.2
Apparent Density (g/cm ³)	0.8-1.5	
Tap Density (g/cm ³)	2.0-3.2	

Sintering Physical Properties

Sintering Temp (°C)	Density (%)	Hardness (HRB)	Bending Strength (MPa)
700	94.94	95.5	788.7
750	97.33	98.0	964.9
800	98.04	95.6	945.3
850	97.82	81.5	908.3
900	97.54	80.8	856.2

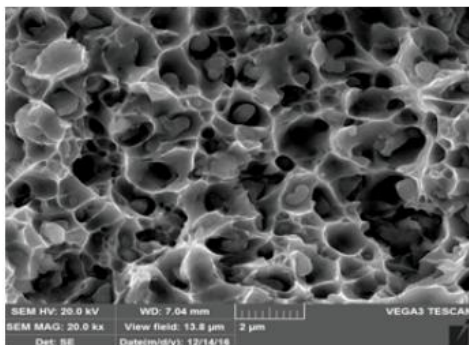
The Best Sintering Range: 750–800°C

The Min.Temperature in Use: 750°C

The Max.Hardness: 99.5HRB

The Max.Bending Strength: 1006.2MPa

Sintered Shape : 800°C



Density (%) Hardness(HRB) BendingStrength(MPa)

