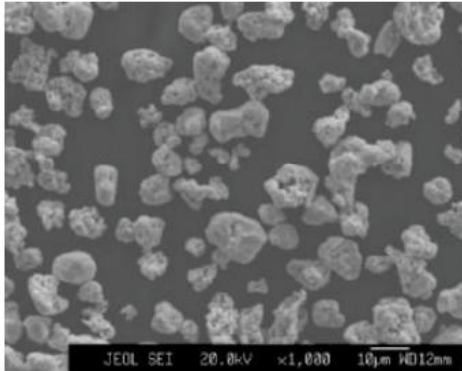


## Grade: **UF-D**

### SEM-VIEW



- For diamond tools, PM / MIM
- High reactivity at low temperature
- Uniform and fine structure

### Chemical Analysis (%)

Fe	≥98.85
O	≤0.70
C	≤0.03
N	≤0.01

### Physical Properties

	D10	3.5-5.0
Particle Size Distribution (µm)	D50	7.0-9.0
	D90	13.0-25.0
	Apparent Density (g/cm <sup>3</sup> )	1.9-2.5
Tap Density (g/cm <sup>3</sup> )	3.2-4.2	

### Sintering Physical Properties

Sintering Temp (°C)	Density (%)	Hardness (HRB)	Bending Strength (MPa)
650	88.47	62.8	517.8
700	92.80	73.3	666.0
750	95.78	81.9	725.1
800	95.89	72.9	606.9
850	92.94	60.4	497.8

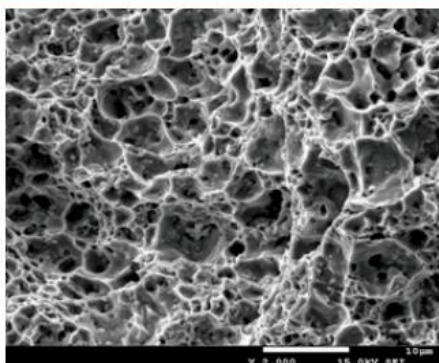
The Best Sintering Range: 700-800°C

The Min.Temperature in Use: 700°C

The Max.Hardness: 85HRB

The Max.Bending Strength: 745.1MPa

### Sintered Shape : 800°C



Density (%) Hardness(HRB) BendingStrength(MPa)

